



11.12
MASONRY
BRICK AWARDS
SPECIAL

Landolt + Brown

Niall McLaughlin Architects

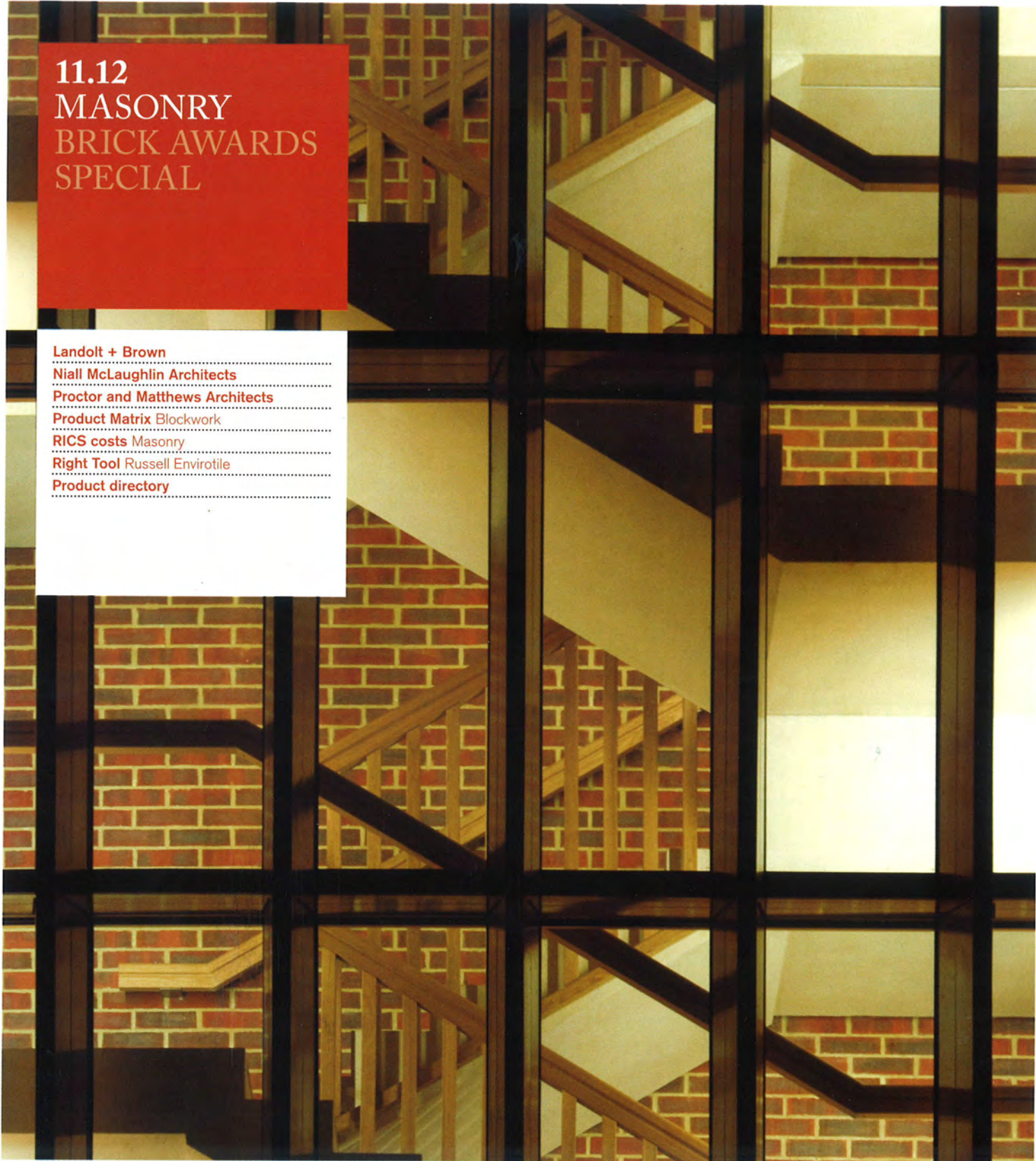
Proctor and Matthews Architects

Product Matrix Blockwork

RICS costs Masonry

Right Tool Russell Envirotile

Product directory



STUDENT HOUSING, SOMERVILLE COLLEGE, OXFORD

NIALL McLAUGHLIN ARCHITECTS

Selected products

Brick

Ibstock Reigate Purple Multi
www.ibstock.com

Precast concrete

Smooth architectural finish with light blast,
Explore Manufacturing/Laing O'Rourke
www.laingorourke.com

Precast concrete textured finish to corridor walls and canopies

Ref code: 1295/1 – textured using bespoke
Reckli Mat profile with light blast, Explore
Manufacturing/Laing O'Rourke
www.laingorourke.com

Bespoke joinery – timber window units, stair lantern screens and internal joinery

European oak, Panel Edged Products

Bespoke steelwork to stair lanterns and entrance gate

Gascoyne and Beever
www.gascoyne-beever.co.uk

Prefabricated bathroom pods

Bathsystem UK
www.bathsystem.co.uk

Ironmongery

3V Architectural Hardware
www.3vahl.com

Photovoltaic panels

AEE Systems
www.aesolarsystems.com

Bespoke felt notice board to study rooms

Naish Felts
www.naishfelts.co.uk

Blinds to studies and communal areas

Silent Gliss
www.silentgliss.co.uk



Project data

Start on site June 2010

Completion September 2011

Gross internal floor area 2,541m²

Form of contract Design and Build

Total cost £8.5 million

Cost per square metre £3,345

Architect: Niall McLaughlin Architects

Client The University of Oxford and

Somerville College

Structural engineer Price and Myers

M&E consultant Hoare Lea

Quantity surveyor Gardiner and Theobald

Project manager PDCM

CDM co-ordinator HCD

Approved building inspector HCD

Main contractor Laing O'Rourke

CAD software used Vectorworks

Portion of floor area with daylight factor >2%
37.7 per cent

Portion of floor area with daylight factor >5%
15.7 per cent

On-site energy generation

22 per cent (based on the model and
includes the PV array)

Annual mains water consumption

29m³/occupant

Airtightness at 50Pa 4.4m³/h.m²

Heating and hot water load 65.3kWh/m²/yr

The intention was to form an extension to the existing listed buildings of Somerville College and give a new frontage onto the Radcliffe Observatory Quarter. The concept for the two buildings to overlook the street draws on Pevsner's analysis of Oxford's picturesque, episodic Queen's Lane. Building elements are used to frame and terminate short vistas. The window units are pushed out from the facade, a contemporary restatement of the themes of Sir Phillip Dowson's Wolfson Building in Somerville College. This allows oblique views up and down the street, through side windows and maximizes the natural light entering the rooms. The buildings use local bricks, European oak and concrete containing GGBS. The project has been designed to achieve BREEAM 'Very Good' rating.

NICK KANE

Simon Bishop, project architect,
Niall McLaughlin Architects

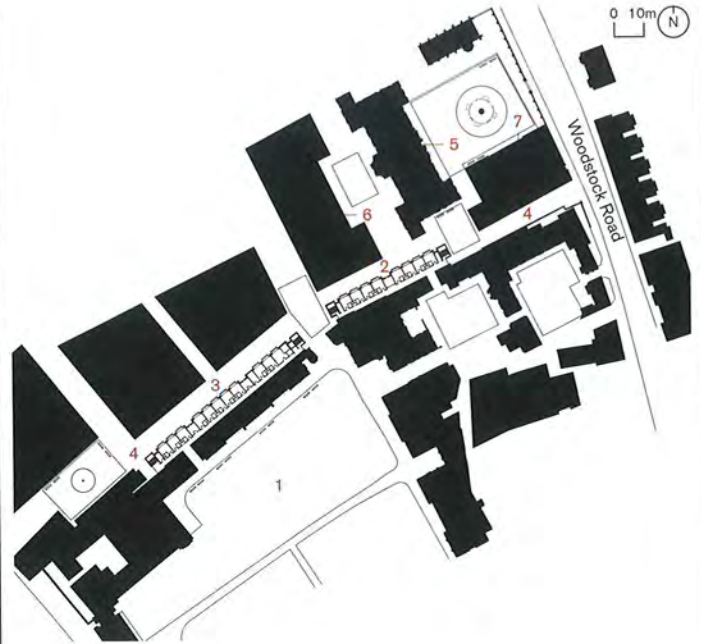
STUDENT HOUSING, SOMERVILLE COLLEGE, OXFORD

NIALL McLAUGHLIN ARCHITECTS

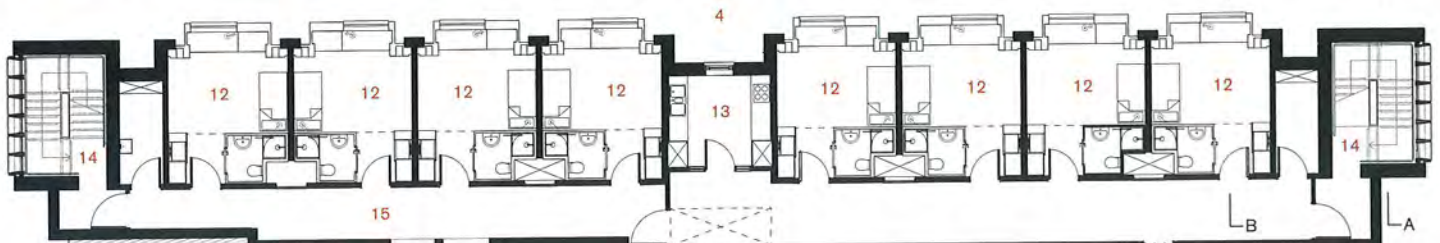


NICK KANE

1. Somerville College Quadrangle
2. East Building
3. West Building
4. East West Link
5. Radcliffe Infirmary
6. Proposed Mathematical Institute
7. Outpatients Building
8. Somerville College 'House' building
9. Somerville College 'Darbshire' building
10. Courtyard
11. Link to college
12. Study bedroom
13. Kitchen
14. Stair tower
15. Corridor



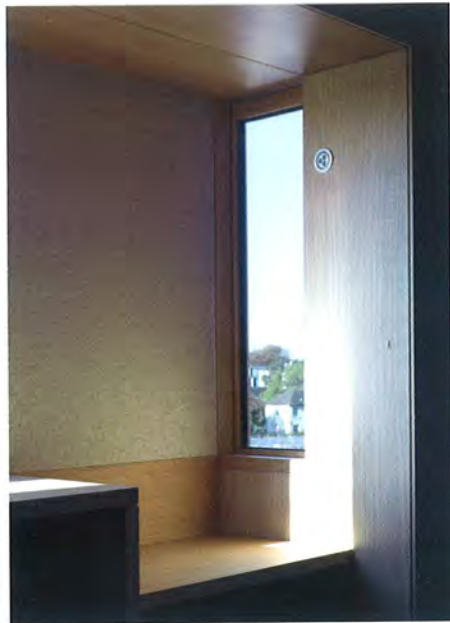
Site plan



Ground floor plan

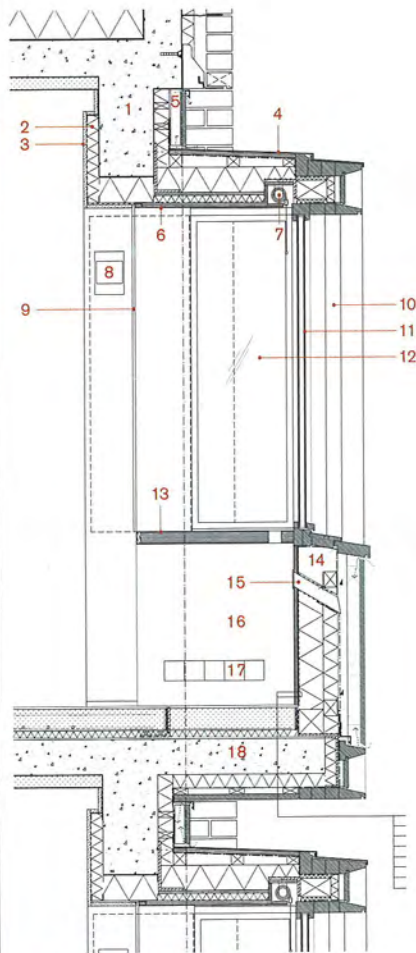


**STUDENT
HOUSING,
SOMERVILLE
COLLEGE,
OXFORD
NIALL
McLAUGHLIN
ARCHITECTS**

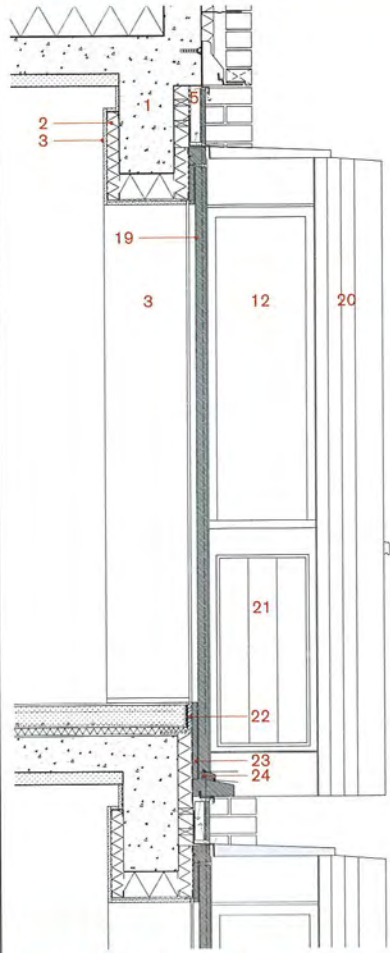


NICK KANE

1. Concrete downstand beam
2. Mineral wool insulation
3. Plasterboard
4. Flashing
5. Ventilation
6. Veneered plywood panelling
7. Spring-loaded blind
8. Recessed light fitting
9. 10mm shadow gap
10. Hardwood window reveal
11. Double-glazed fixed window with hardwood frame
12. Double-glazed fixed window in elevation behind
13. Veneered desk with hardwood lip
14. Timber beam
15. 50mm dia UPVC pipe
16. Cladding panel
17. Power and data sockets
18. Cantilevered floor
19. Panelled opening hardwood shutter
20. Hardwood profile
21. Hardwood rainscreen cladding
22. Acoustic edge insulation
23. Treated hardwood panel
24. Weatherseals
25. Oak cladding
26. Precast brick panel
27. Bench
28. Fixed side lights with shutters

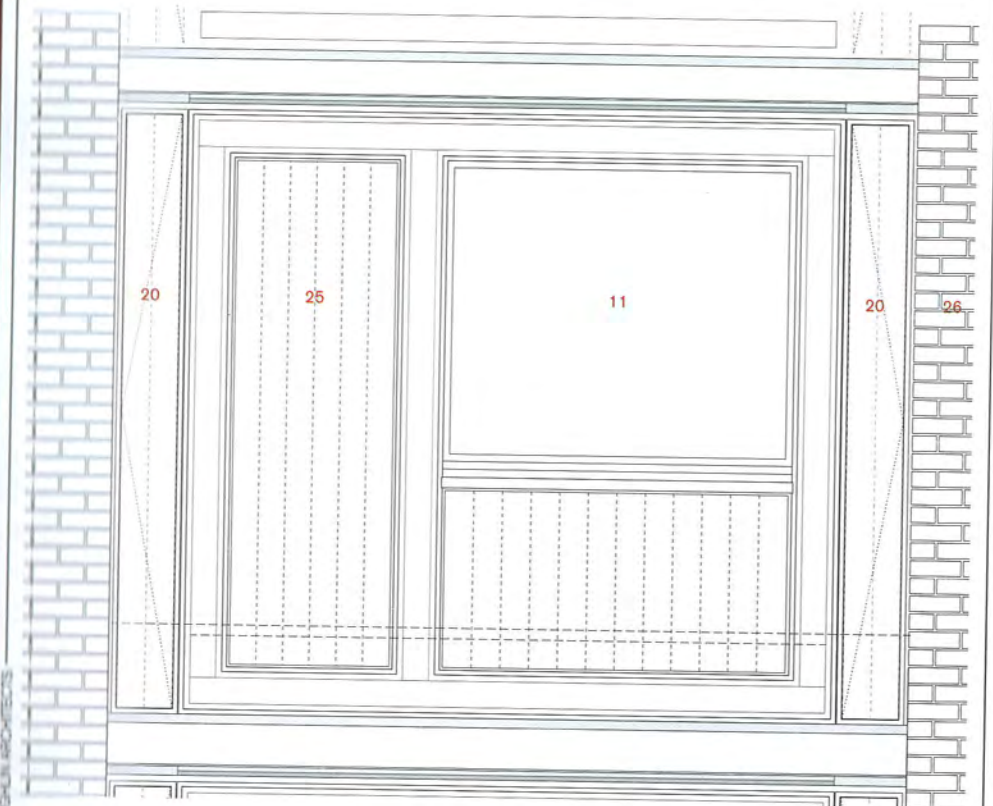
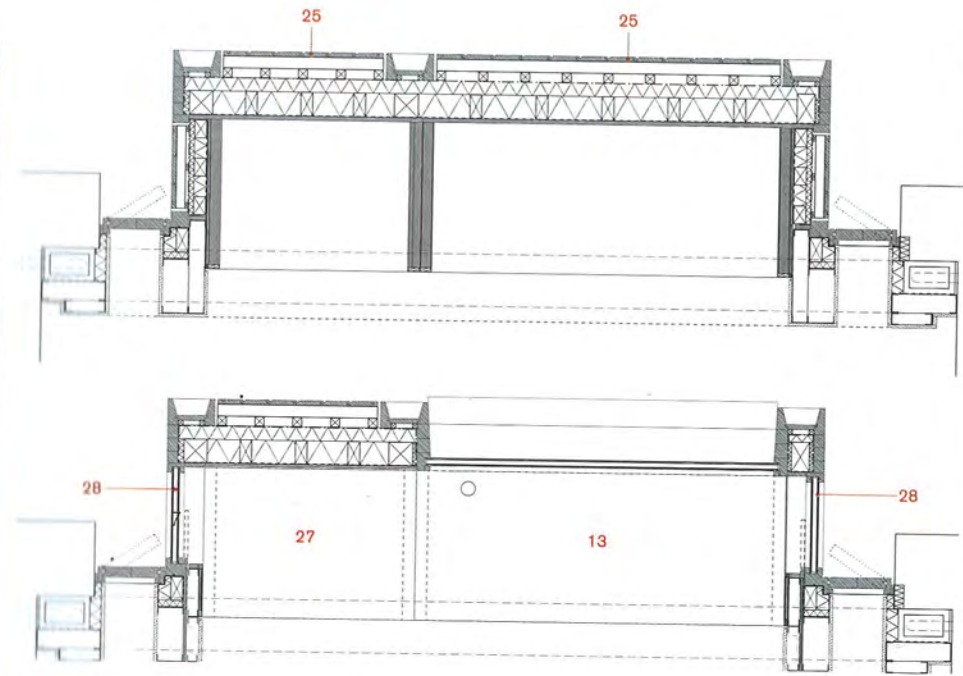
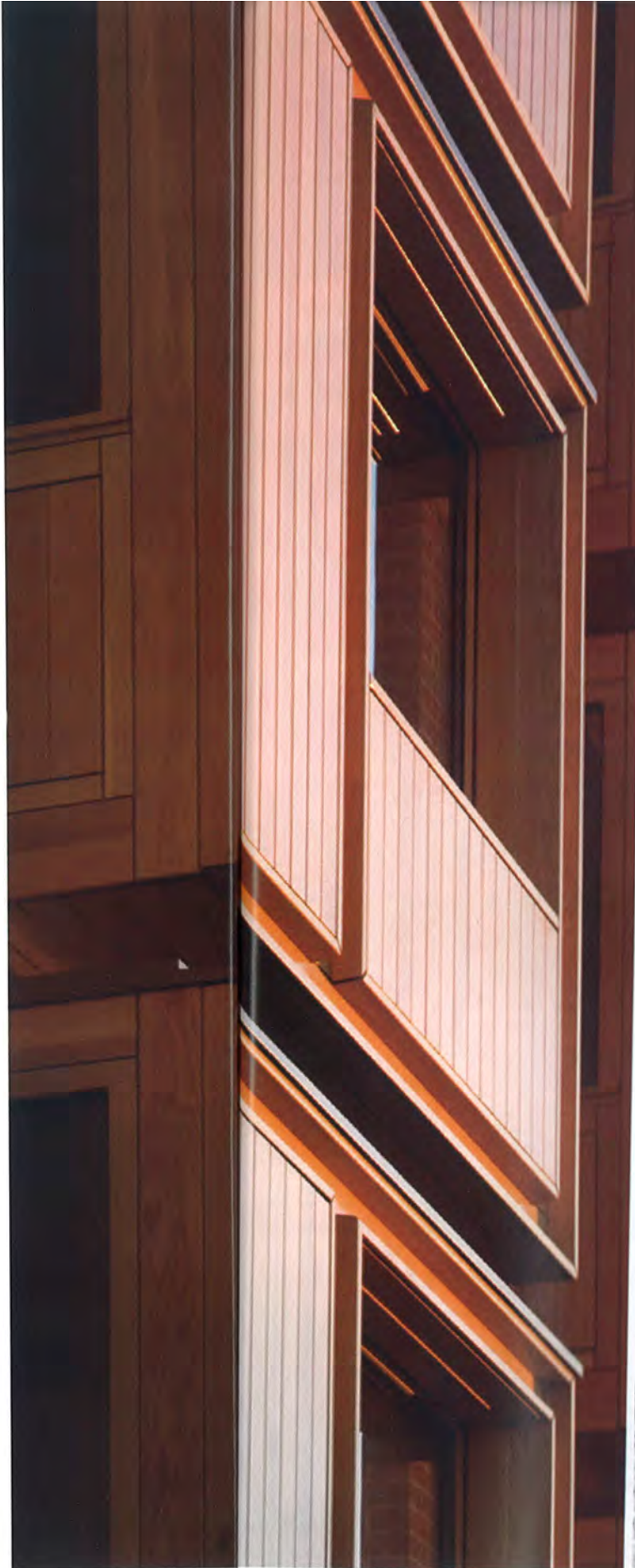


Section through desk



Section through ventilation panel

0 200mm



Typical window unit

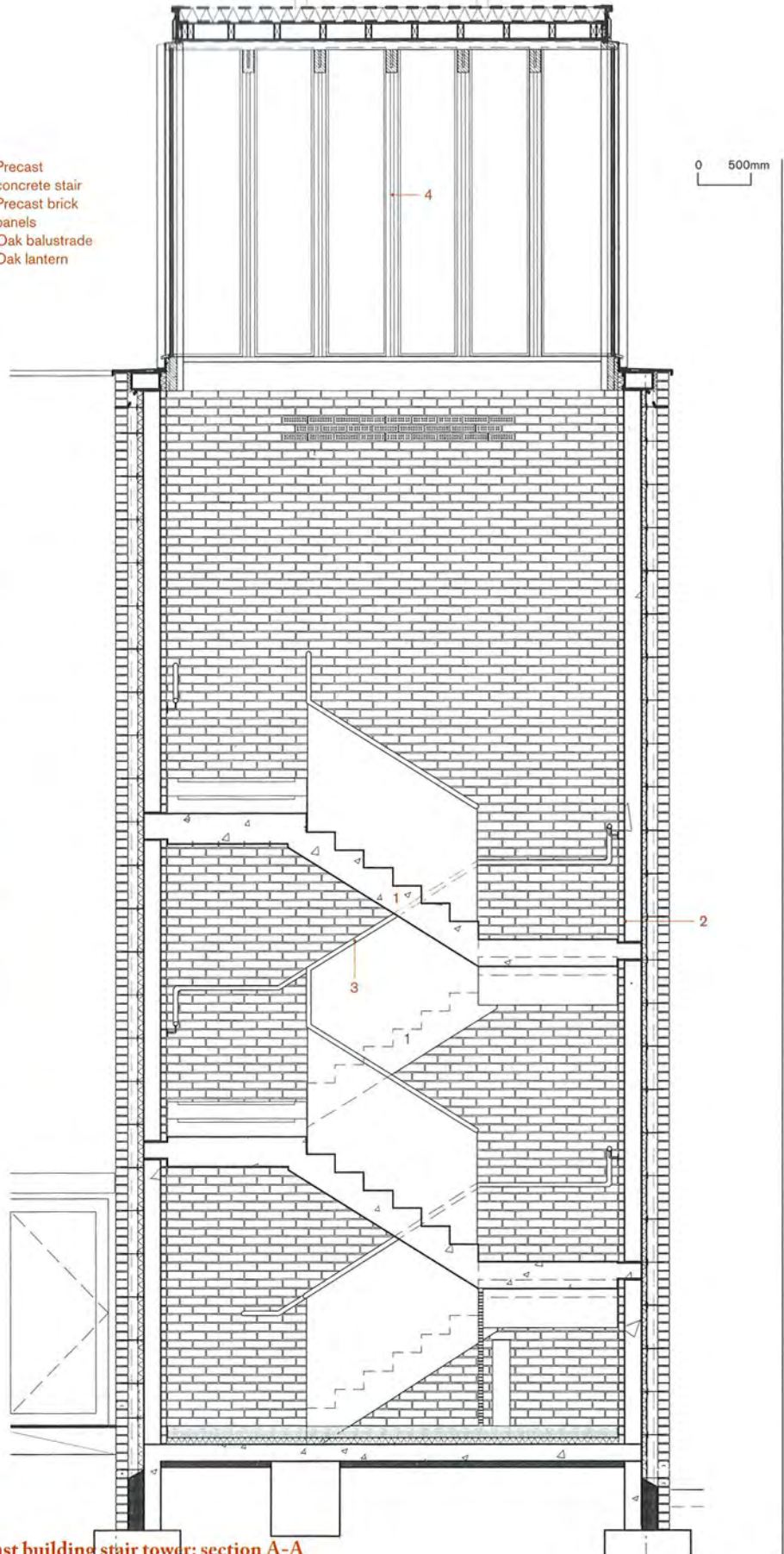
STUDENT HOUSING, SOMERVILLE COLLEGE, OXFORD

NIALL
McLAUGHLIN
ARCHITECTS

NICK KANE




1. Precast concrete stair
2. Precast brick panels
3. Oak balustrade
4. Oak lantern



East building stair tower: section A-A

**STUDENT
HOUSING,
SOMERVILLE
COLLEGE,
OXFORD**
NIALL
McLAUGHLIN
ARCHITECTS





**STUDENT
HOUSING,
SOMERVILLE
COLLEGE,
OXFORD**
NIALL
McLAUGHLIN
ARCHITECTS

At night, light glows through the oak lanterns and deep screens of the stair towers at either end of the new ranges of student housing

NIALL McLAUGHLIN ARCHITECTS