

## Niall McLaughlin Architects Burren House, Dublin



Anglesea Road in Dublin is lined with substantial Victorian terraced redbrick houses. Gardens stretch back from the houses to the River Dodder at the back of the site. High granite rubble walls enclose them. The back land space has a serene character of its own. It is a maze of stony garden enclosures. The area is given to flooding. Locals estimate that anything below the ground floor door handles is vulnerable.

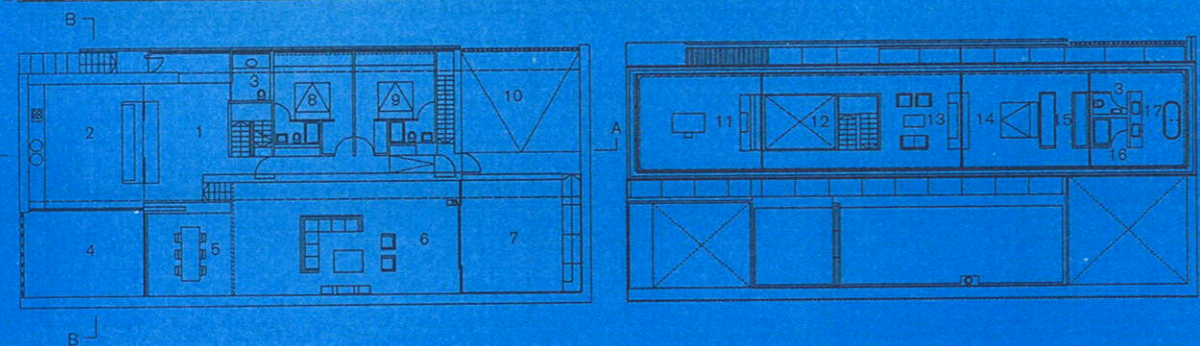
The design for this house began with a conversation with the client about a persistent theme in the work of Californian architect Craig Ellwood. He prepared a significant number of designs based on the idea of a glazed truss surmounting a stone enclosure. The truss would contain a pavilion and the stone enclosure would be organised into rooms and courtyards. This arrangement brings together the two house types explored by Mies van der Rohe; The Farnsworth House, a vitrine opening out to nature and The Courtyard House, an enclosed world looking back into itself.

The form, material palette and luminosity for this house are intended to work in that cloudy, showery, maritime environment particular to Dublin.  
*Niall McLaughlin, practice founder, Niall McLaughlin Architects*

**Building profile** Living 71.3m<sup>2</sup> · Bedroom 1 55.2m<sup>2</sup> · Bedroom 2 18.8m<sup>2</sup> · Bedroom 3 18.5m<sup>2</sup> · Kitchen 17m<sup>2</sup> · Storage 53.6m<sup>2</sup> · External space 54.6m<sup>2</sup> · Garage 35m<sup>2</sup> · Self-contained unit 32.6m<sup>2</sup> · Study 30.7m<sup>2</sup> · Estimated annual CO<sub>2</sub> emissions/m<sup>2</sup> treated floor area 19.43 kg CO<sub>2</sub>/m<sup>2</sup>



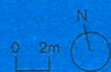
**Left** The elevated glazed pavilion atop a stone enclosure draws inspiration from the work of Craig Ellwood.  
**Right** The double-height hall is flanked by bridges connecting the living room and study.



Ground-floor plan

Upper-floor plan

1. Hall
2. Kitchen
3. WC
4. West courtyard
5. Dining room
6. Living room
7. East courtyard
8. Bedroom 2
9. Bedroom 3
10. Carport
11. Study
12. Void above hall
13. Living room
14. Bedroom
15. Dressing
16. Shower
17. Bathroom

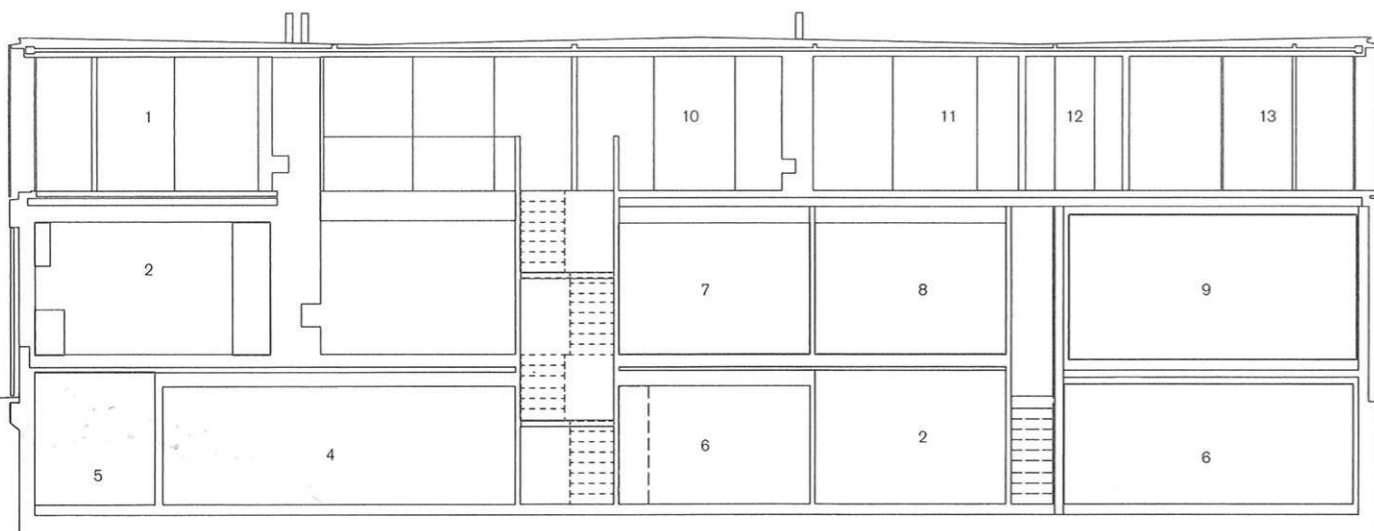


### Credits

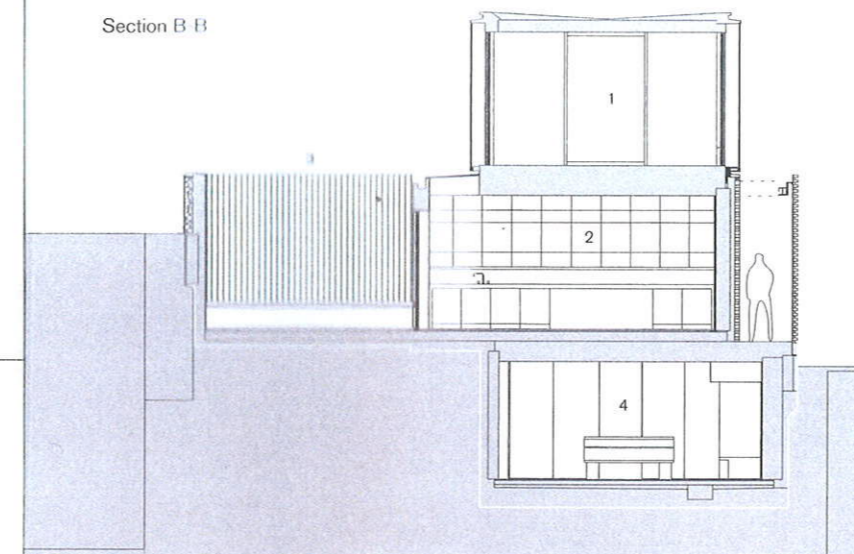
Start on site 2004  
Completion February 2009  
Gross internal floor area 490m<sup>2</sup>  
Form of contract Full RIAI/STD contract  
Total cost £2,100,000  
Cost per m<sup>2</sup> £4,286  
Client Reg Tuthill  
Architect Niall McLaughlin Architects  
Structural engineer  
Casey O'Rourke Associates  
Main contractor McInerney Contracting



Clockwise from left Living area; new granite walls enclosing ground floor; rear elevation



Section A-A



Section B-B

- 1. Study
- 2. Kitchen
- 3. West courtyard
- 4. Billiard room
- 5. Plant
- 6. Store
- 7. Bedroom 2
- 8. Bedroom 3
- 9. Carport
- 10. Living room
- 11. Bedroom
- 12. WC
- 13. Bathroom

