

Saltmarsh House, Isle of Wight, United Kingdom

尼爾·麥克勞克林建築師事務所
Niall McLaughlin Architects

主要建築師：尼爾·麥克勞克林
結構工程：Smith and Wallwork
機電工程：Ritchie + Dafin
施工單位：Millimetre
景觀設計：金·威爾基
空間性質：住宅
總面積：106平方米
主要結構：鋼構、木材、玻璃
座落位置：英國懷特島
影像：尼克·凱恩
文字：尼爾·麥克勞克林建築師事務所
採訪：洪雅琪

Principal Architects · Niall McLaughlin
Structural Engineering · Smith and Wallwork
M&E Engineering · Ritchie + Dafin
Contractor · Millimetre
Landscape Design · Kim Wilkie
Character of Space · Residence
Total Floor Area · 106 m²
Principal Structure · Steel · Wood · Glass
Location · Isle of Wight, United Kingdom
Photos · Nick Kane
Text · Niall McLaughlin Architects
Interview · Grace Hung



1. 廚房
2. 餐廳

1. kitchen
2. dining room

鹽沼之家布局單純，包含客廳、餐廳，以及由三個較小空間構成的廚房、臥室及衛浴。該住宅坐落於一處保護區，這裡有座可追溯至1860年代的二級保護維多利亞式房屋，縱然基地周圍被石棉纏身的平房和柏油碎石車道占據，但該處那橡樹、榛樹和楓樹茂密的林地，仍散發著無法取代的吸引力。

住宅鄰近一條蜿蜒小路，順著它穿過綿長的草地和果樹，可一直延伸到水邊。當人們從山上俯瞰而下，映入眼簾的是一面深棕鍍銅的金字塔形屋頂，其與泥灘和沙丘的色澤形成鮮明對比。再者，獨特的塔形屋頂是參考二十世紀的溫室形式，如同過往為山中花園增色不少。

建築以多道五公尺高的鋼構方管劃設內部的組織結構，同時支撐起輕型桁架屋頂。綜觀布局，主廳（起居室與餐廳）及休憩、烹飪和洗滌空間各占據整體空間一半，而偌大的桁架屋頂則又把內外巧妙的收攏在一個空間內。鋼構框架刻意塗上金黃色，屋頂下方也襯有木材，設計師藉由這些材料與風化的銀色甲板，共同呼應周圍牧場和沼澤地的自然冷色調，讓鹽沼之家彷彿一個漂浮在野草生態上的精緻鋼構亭，俯瞰著英國南方懷特島東北部的潮汐鹽沼。

Saltmarsh House includes a long living and dining hall framed by three smaller spaces: a kitchen, a bedroom, and a bathroom. Located in a Conservation Area, the site for the house is the seaward edge of the gardens of a grade II listed Victorian house dating from the 1860s. Whilst occupied by an asbestos ridden bungalow and tarmac driveway, the site is characterised by pasture and rich woodland containing oak, hazel and field maple.

The house is approached by a serpentine track that winds down the hill through long grasses and fruit trees towards the water's edge. Descending the hill, the first glimpses of the house are of the four pyramidal ridges of the deep brown patinated copper roof set against the ochre and sandy colours of the mudflats and dunes. The distinctive roof form references the repeating pitched roofed glass modules of the early 20th Century glasshouses which once graced the kitchen gardens further up the hill.

The building is arranged around a 5m x 5m structural grid of quadripartite tubular steel columns that defines the organisational structure of the house and supports a lightweight trussed roof. The building is four bays long and one bay wide with a further half bay cantilevering out to all sides. The main hall space occupies three complete bays whilst the sleeping, cooking, and washing spaces occupy half bays along with a perimeter veranda. The roof form acts to unite the individually expressed internal and external spaces within a singular volume. The steel frame is painted in a rich golden colour and the underside of the copper roof is lined with timber. Together with the weathered silver deck, these materials reflect the warm hues and cool tones of the surrounding pasture and marshland. Saltmarsh House overlooks a tidal salt marsh in the northeast of the Isle of Wight. Conceived as a delicate, steel framed pavilion that floats above a meadow of wild grasses.



左頁：該案基地位於一處橡樹、榛樹與楓樹茂密的林地，散發野性的自然吸引力





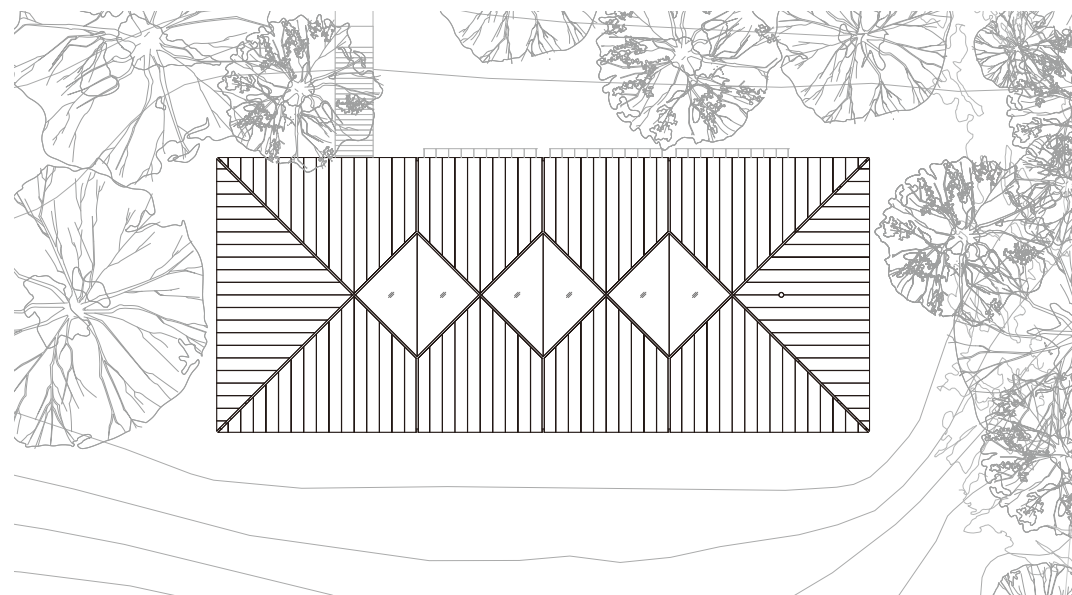
右頁·左頁：作為結構的桁架屋頂不僅滿足遮風避雨，更巧妙將外部景觀收攏入室



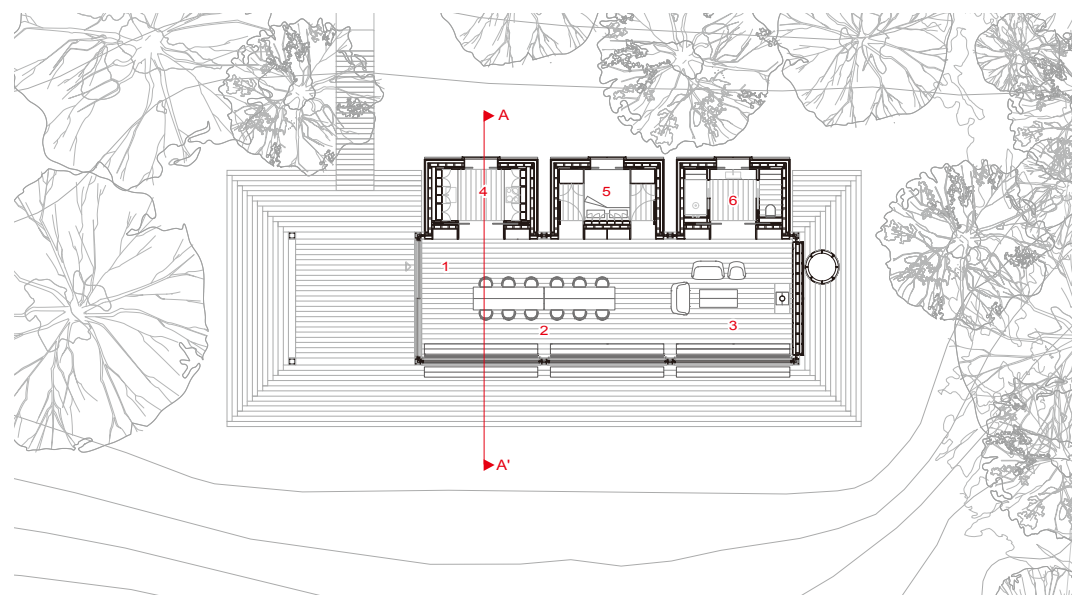
- 1. 入口
- 2. 餐廳
- 3. 客廳
- 4. 廚房
- 5. 臥室
- 6. 衛浴

- 1. entrance
- 2. dining room
- 3. living room
- 4. kitchen
- 5. bedroom
- 6. bathroom

屋頂層平面圖
ROOF PLAN



地面層平面圖
GROUND FLOOR PLAN





右頁·左頁：偌大的塔形屋頂採用深棕鍍銅色，與翠綠景觀形成鮮明對比



scope

