



右頁：新圖書館呼應周邊建築風格，外部主要以磚材建造而成



## 英國 劍橋大學莫德林學院新圖書館 The New Library, Magdalene College, Cambridge, United Kingdom

尼爾·麥克勞克林建築師事務所  
Niall McLaughlin Architects

主要建築師：尼爾·麥克勞克林 蒂姆·艾倫·布斯  
克萊爾·麥克梅納明  
結構工程：Smith & Wallwork  
施工單位：Cocksedge  
空間面積：1600平方公尺（內部總面積）  
主要材料：磚材、膠合木、直交集成板、木窗框、  
橡木、立維梓屋頂、木地板  
座落位置：英國劍橋  
影像：尼克·凱恩  
文字：尼爾·麥克勞克林建築師事務所  
採訪：洪雅琪

Principal Architects · Niall McLaughlin (Practice principal) · Tim Allen-Booth (Project associate) · Claire McMenamin (Project architect)  
Structural Engineering · Smith & Wallwork  
Contractor · Cocksedge  
Total Floor Area · 1600 m<sup>2</sup> (GIA)  
Principal Materials · Brick · Glue-laminated timber · Cross-laminated timber · Timber window frames · Oak joinery · Standing seam zinc roof · Timber flooring  
Location · Cambridge, United Kingdom  
Photos · Nick Kane  
Text · Niall McLaughlin Architects  
Interview · Grace Hung



剖面圖 A-A' SECTION A-A'

1. 閱讀室 2. 檔案工作室 3. 藝廊

1. reading room 2. archive workroom 3. picture gallery

劍橋大學新圖書館位於一個高度敏感的歷史環境中，該項目沿著學區中兩座花園的邊界而造，其位置擴展了建築和庭院既有的排列，同時取代了相鄰的佩提斯大樓中狹窄且簡陋的設施，並整合既有檔案室和圖像室。

設計團隊想讓建築成為一個逐漸上升的旅程，隱喻走向光明。在上升的過程中，會經過一些房間、長廊和藏書處，到達頂樓，則可看到草坪上的池塘。建築想為人們創造多元的使用方式，讓人們根據自身喜好與之互動，例如享受在大廳裡、沉靜在小房間，又或者躲藏進一處私密小空間。

一個一個有規律的磚造煙囪支撐著地板和書架，並將暖空氣帶入建築內進行通風，在每組四個煙囪之間有一個天窗，將內部空氣引流上升，光線向下照耀，這種規律排列自然延伸出一種層次結構——狹窄區域用於流通，寬闊區用於閱讀。新圖書館的建材和形式靈感皆源自於周邊環境和學院規範，意即建造一個高度耐用的永續建築。承重磚、木地板和雙坡屋頂結構是既有建築元素，其中磚造煙囪使天際線看似更加生動，而石製窗花使門窗顯得格外亮眼，因此設計團隊主要運用這些關鍵元素建造新圖書館，其中刻意選用木材取代石頭作為窗框，讓窗框隨著時間推移，會逐漸變成像石材一樣的銀灰色。

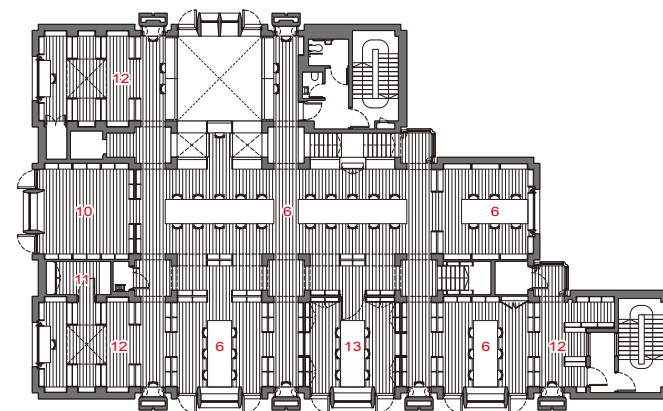
The new building is sited in a highly sensitive historic setting, along the boundary wall between the enclosed space of the Master's Garden and the more open space of the Fellows' Garden. Its placement extends the quadrangular arrangement of buildings and courts that developed from the monastic origins of the college site. The new building replaces cramped and poorly equipped facilities in the adjacent Grade 1 Listed Pepsys Building with a larger library, incorporating an archive facility and a picture gallery.

We wanted to make the building a journey that gradually rose up towards the light. On the way up there would be rooms, galleries and places to perch with a book. At the top, there would be views out over the lawn towards the water. We wanted to create a variety of ways for someone to situate themselves depending on inclination. You might sit in a grand hall, a small room, or tuck yourself into a tiny private niche.

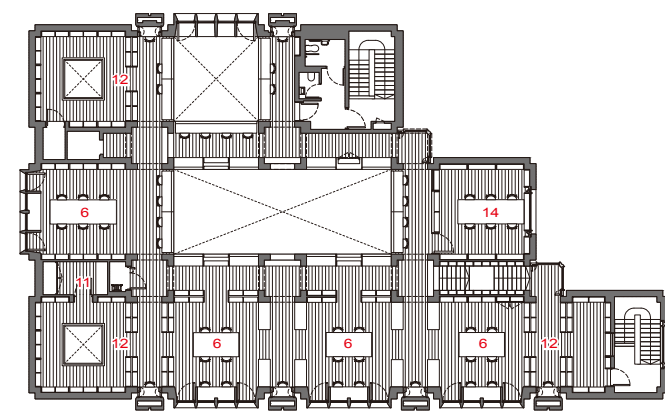
A regular grid of brick chimneys supports the floors and bookshelves and carries warm air up to ventilate the building. Between each set of four chimneys there is a roof lantern bringing light down into the spaces below: air rising and light falling. This regular array produces a natural hierarchy with narrow zones for circulation and wide zones for reading rooms. The materiality and form of the new library are derived both from its context and from the College's brief to make a highly durable and sustainable building. The older college buildings are of load bearing brick, with timber floors and gabled pitched roof structures. Brick chimneys animate the skyline and stone tracery picks out the fenestration. We tried to make the new building from this set of architectural elements. We used timber instead of stone for our window tracery, which will weather over time to become a silvery grey like the stone. We worked carefully with our builders to find a variety of bricks that would match the tapestry-like quality of the older College buildings.



右頁·左頁：設計團隊藉由空間布局，形塑一個逐漸上升的旅程

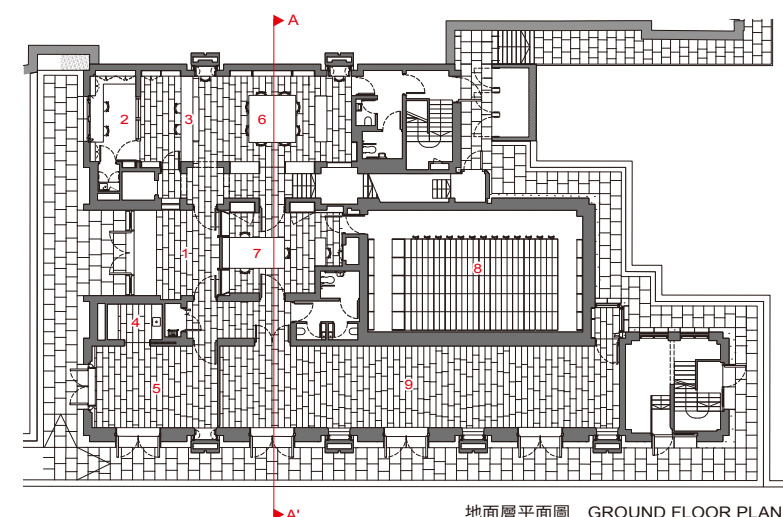


一樓平面圖 FIRST FLOOR PLAN



二樓平面圖 SECOND FLOOR PLAN

- |             |                              |
|-------------|------------------------------|
| 1. 入口大廳     | 1. entrance lobby            |
| 2. 圖書管理員辦公室 | 2. librarian's office        |
| 3. 服務台      | 3. help desk                 |
| 4. 廚房       | 4. kitchen                   |
| 5. 公共區      | 5. social area               |
| 6. 閱覽室      | 6. reading room              |
| 7. 檔案工作室    | 7. archive workroom          |
| 8. 檔案庫      | 8. archive store             |
| 9. 藝廊       | 9. picture gallery           |
| 10. 期刊區     | 10. periodicals reading area |
| 11. 影印室     | 11. copy room                |
| 12. 藏書區     | 12. book stacks              |
| 13. 小組工作室   | 13. group work room          |
| 14. 法律藏書室   | 14. law library              |



地面層平面圖 GROUND FLOOR PLAN





右頁·左頁：選用木材作為窗框，讓其隨著時間推移，逐漸變成如石材般的銀灰色

